



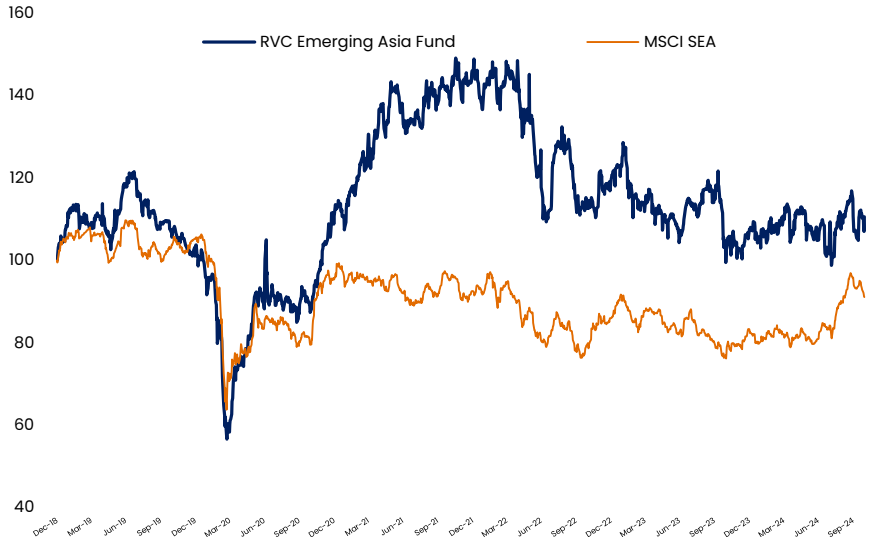
## Investment Strategy

The Fund's objective is to deliver **superior absolute returns across** a long term investment horizon by investing across the Asian Equity markets.

We apply a **sustainable investment approach** which aims to discover emerging and undervalued companies which are primarily (but not exclusively) small to mid caps with a value tilt.

The Fund follows an active investment style.

## Historical Performance Graph



## Fund Information

**Fund Name:** RVC Emerging Asia Fund  
**Fund currency:** USD  
**Current Price:** US\$83.10  
**Min. investment:** USD 100,000  
**Management Fee:** 1.5% p.a.  
**Performance Fee:** 15% p.a. over high water mark  
**Geography:** Asia with a focus on ASEAN  
**Income Utilisation:** Accumulating  
**Domicile:** Cayman Islands  
**ISIN:** KYG7742Y1061  
**Bloomberg Ticker:** RVCEMAS KY EQUITY

## Historical Performance Table

	1 Month	YTD	1 Year	2 Years	3 Years
RVC Emerging Asia Fund	(3.8) %	5.1 %	11.2 %	(1.8) %	(21.6) %
MSCI SEA	(2.0) %	10.3 %	19.7 %	15.3 %	(4.0) %

## Fund Advisors

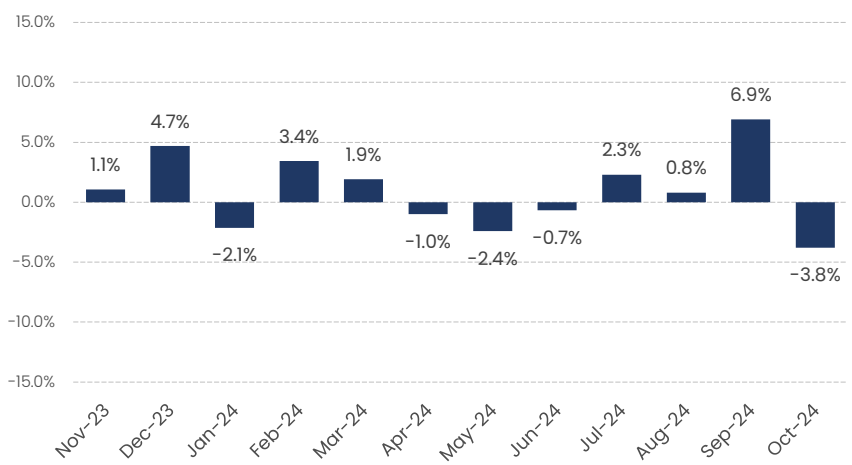
**Investment Manager:** Ross & Van Compernelle (Cayman)  
 Harbor Place, 2<sup>nd</sup> F  
 103 South Church Street, P.O. Box 472, George Town  
 Grand Cayman, Cayman Is.

**Advisor:** Hybrid Partners Limited (Thailand)  
 141 Major Tower Thonglor, 12<sup>th</sup> F  
 Sukhumvit, Bangkok 10110  
 Thailand

**Custodian & Administrator:** DBS Bank Singapore  
 12 Marina Boulevard, Marina Bay Financial Centre Tower 3,  
 Singapore 018982

**Auditor:** Pricewaterhouse Coopers 7  
 Straits View, Marina One East Tower, Level 12. Singapore  
 018936

## Monthly Performance (LTM)



### Disclaimer

Nothing herein shall constitute as an investment recommendation or investment, accounting, tax or legal advice, all content is for informational purposes only. Please visit our website <https://www.rossvancompernelle.com/home> for the full disclaimers.



## Investment Strategy

The Fund's objective is to deliver **superior absolute returns across** a long term investment horizon by investing across the Asian Equity markets.

We apply a **sustainable investment approach** which aims to discover emerging and undervalued companies which are primarily (but not exclusively) small to mid caps with a value tilt.

The Fund follows an active investment style.

## Fund Information

**Fund Name:** RVC Emerging Asia Fund  
**Fund currency:** USD  
**Current Price:** US\$83.10  
**Min. investment:** USD 100,000  
**Management Fee:** 1.5% p.a.  
**Performance Fee:** 15% p.a. over high water mark  
**Geography:** Asia with a focus on ASEAN  
**Income Utilisation:** Accumulating  
**Domicile:** Cayman Islands  
**ISIN:** KYG7742Y1061  
**Bloomberg Ticker:** RVCEMAS KY EQUITY

## Sustainability

Ross & Van Compernelle integrates an Environmental, Societal and Governance (ESG) framework into our investment process which can highlight and manage material ESG risks and opportunities.

Our 4-fold approach which covers



Integration



Engagement



Exclusion



Reporting

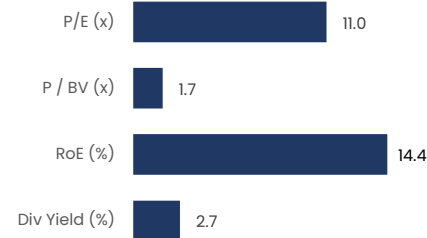
For details on our ESG Policy please see

<https://www.rossvancompernelle.com/focus/sustainability>

## Portfolio Metrics & Market Capitalisation

### Portfolio Metrics

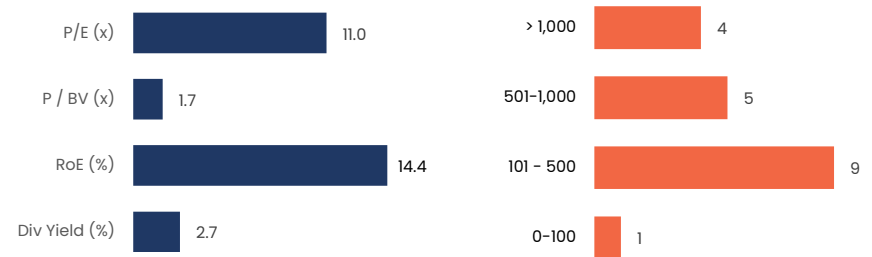
Trailing 12 months



### Market Capitalisation

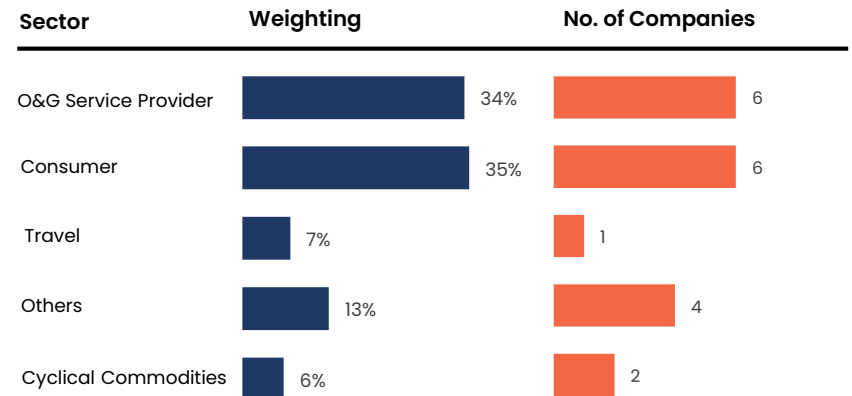
USD mn

No. of Company



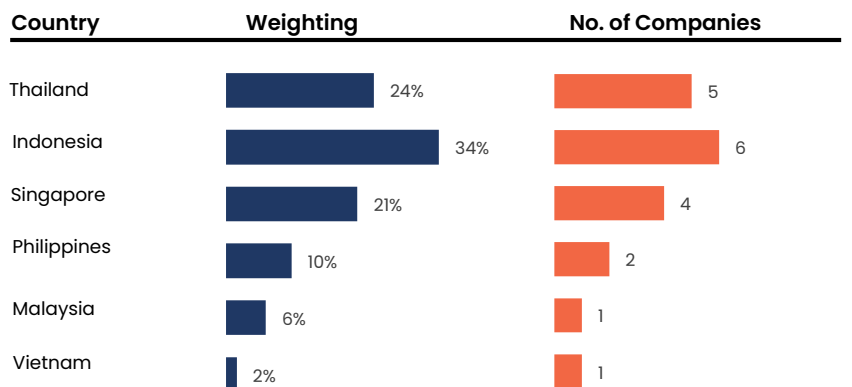
## Top Sector Weighting

Portfolio allocation according to Sector



## Country Weighting

Portfolio allocation according to Country



### Disclaimer

Nothing herein shall constitute as an investment recommendation or investment, accounting, tax or legal advice, all content is for informational purposes only. Please visit our website <https://www.rossvancompernelle.com/home> for the full disclaimers.